

NEW SELECTION

SUMMER SPECIAL  
AT BARGAIN  
**PRICES!**

Special Offer  
FOR HER  
UP TO **65% OFF**

All sizes at  
**NO EXTRA COST**  
UP TO SIZE **26**

**atlasformen.co.uk**

 100% Secure Payment

# SPECIAL SUMMER OFFERS



## Safari Jacket

Opt for bold tones with this stylish safari jacket (approx. 150 g/m<sup>2</sup>)! The comfortable design is made from **viscose and lined with taffeta** on the body (approx. 60 g/m<sup>2</sup>), and it features a **lapel collar**, 2 faux pockets on the top, **2 genuine pockets with button-down flaps** at the sides and a **drawstring waistline** for a perfect fit. Super-versatile, it can be worn with long sleeves (button-up cuffs) or rolled-up sleeves (button-up tabs). Horn-style buttons and **gold-coloured rivets** on the collar. Outer: 88% viscose, 12% polyamide. Lining: 100% polyester. Front and back length: approx. 28 in/71 cm for UK size 12-14. *Machine wash at 30°C.*

Colour: **fuchsia** / Sizes: **8-10 12-14 16-18 20-22 24-26** / Ref.: **ZP001**

**£29.99**  
~~£65.90~~

Save £35.91

## Dream Catcher T-Shirt

You'll love this **original and stylish** printed t-shirt! In subtle colours, it features **drop shoulders** and is made from an **easy-care jersey fabric** (approx. 160 g/m<sup>2</sup>), making it perfect for summer! Rounded neckline with an **inner trim** and double topstitched details on the armholes and straight hem. **Plain back**. 100% polyester, **cotton feel**. Front and back length: approx. 27.2 in/69 cm for UK size 12-14. *Machine wash at 30°C. No ironing required.*

Colour: **sky blue**

Sizes: **8-10 12-14 16-18 20-22 24-26**

Ref.: **ZK906**

**POLYESTER  
JERSEY**

Soft cotton  
feel!

**£9.99**  
~~£25.90~~

Save £15.91



All sizes at  
**NO EXTRA COST**  
UP TO SIZE **26**



Split sides



**POLYESTER  
JERSEY**

Soft cotton  
feel!

**70% off**

**£9.99**  
~~£32.90~~

Save £22.91

### Feather Print Top

Check out this stylish and easy-to-wear top! You'll love its **large, unique feather print** at the front and its **flowy jersey fabric** (approx. 160 g/m<sup>2</sup>). Quality finishes include a trimmed crew neck, **three-quarter length sleeves** and a double topstitched hem with **split sides**. 100% polyester, **cotton feel**. Front and back length: approx. 27.3 in/69 cm for UK size 12-14. *Machine wash at 30°C.*

Colour: **blue** / Sizes: **8-10 12-14 16-18 20-22 24-26** / Ref.: **ZP611**



**VISCOSE  
FABRIC**

Soft and  
comfortable!



### Longline T-Shirt

You'll love the **djellaba collar** and flower print on this longline, short-sleeved t-shirt! Perfect for the beach or worn over leggings, it's made from **flowy jersey fabric** (approx. 160 g/m<sup>2</sup>) and has a straight hem with double topstitched finishes. 100% viscose. Front and back length: approx. 32.7 in/83 cm for UK size 12-14. *Machine wash at 30°C. Iron inside out to protect the print.*

Colour: **pink**

Sizes: **8-10 12-14 16-18**

Ref.: **ZF306**

**67% off**

**£10.99**  
~~£32.90~~

Save £21.91



# SPECIAL SUMMER OFFERS



Elasticated waistband



## PYJAMA SET

£19.99

£45.90

Save £25.91

### Floral Pyjama Set

These pyjamas are made from **soft, supple cotton** (approx. 160 g/m<sup>2</sup>) and feature a short sleeve V-neck t-shirt and plain cropped trousers with a practical **elasticated drawstring waistband**. Elegant finishes include a **blue satin bow** on the neckline, a floral print on the left leg, and **side splits** at the hems. 100% cotton. Top front and back length: approx. 27 in/69 cm, trousers inner leg: approx. 21.7 in/55 cm and hem: approx. 9 in/23 cm for UK size 12-14. *Machine wash at 30°C.*

Colour: **blue** / Sizes: **8-10 16-18 20-22 24-26**

Ref.: **ZN806**



## SIZE GUIDE: WOMEN

### Measuring Tips



**1/ Bust:** measure around the fullest part of the bust. Do not draw the measuring tape too tightly.

**2/ Waist:** measure your waist circumference at the level of your belly button.

**3/ Hips:** measure around the fullest part of your hips.

	FR	UK	Bust		Waist		Hips	
			cm	in	cm	in	cm	in
	38 - 40	8 - 10	90 - 98	35.4 - 38.6	73 - 81	28.7 - 31.9	96 - 104	37.8 - 40.9
	42 - 44	12 - 14	98 - 106	38.6 - 41.7	81 - 89	31.9 - 35	104 - 112	40.9 - 44.1
	46 - 48	16 - 18	106 - 114	41.7 - 44.9	89 - 97	35 - 38.1	112 - 120	44.1 - 47.2
	50 - 52	20 - 22	114 - 126	44.9 - 49.6	97 - 109	38.1 - 42.9	120 - 128	47.2 - 50.4
	54 - 56	24 - 26	126 - 138	49.6 - 54.3	109 - 121	42.9 - 47.6	128 - 136	50.4 - 53.5

## Macramé Top

This unique top stands out thanks to its bold colour and **fine macramé insert**. Made from **flowy, easy-to-wear fabric** (approx. 160 g/m<sup>2</sup>), it features a **round piped neckline** and a tone-on-tone 4-button placket. **Three-quarter length sleeves** and a straight hem with a double topstitched finish. 100% polyester, **cotton feel**. Macramé: 100% cotton. Front and back length: approx. 28.7 in/73 cm for UK size 12-14. *Machine wash at 30°C.*

Colour: **coral**

Sizes: **8-10 12-14 16-18 20-22 24-26**

Ref.: **ZQ104**

Macramé insert



Special Offer  
FOR HER  
UP TO  
**65% OFF**

**69% off**

**£10.99**  
£34.90

Save £23.91

**POLYESTER  
JERSEY**

Soft cotton  
feel!



Comfortable  
**STRETCH**  
material



## Stretchy Cropped Trousers

Made from **stretchy cotton and twill** (approx. 300 g/m<sup>2</sup>), these cropped trousers are stylish and comfortable. They have an **elasticated waistband** with belt loops and **2 genuine patch pockets** on the back. 2 decorative pockets and an imitation fly on the front, as well as **side splits** at the hems for added ease of movement. 98% cotton, 2% elastane. Inner leg: 23.6 in/60 cm and hem: approx. 7.5 in/19 cm for UK size 12-14. *Machine wash at 30°C.*

Colour: **white**

Sizes: **8-10 12-14 16-18 20-22 24-26**

Ref.: **ZM307**

**£19.99**  
£39.90

Save £19.91



**atlasformen.co.uk**

100% Secure Payment

## Tropical Print Set

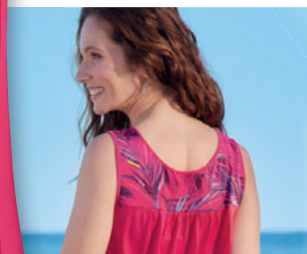
Add a splash of colour to your wardrobe with this **slightly stretchy jersey** set (approx. 180 g/m<sup>2</sup>) in bright pink! **V-neck** and comfortable, it features a **V-neck** vest top with printed panels and a loose, **slightly flared cut**, and trousers with a waistband that's **elasticated at the back** for optimum comfort. Quality details include **2 stitched rounded pockets**, double topstitched finishes and a trim on the neckline and armholes. 95% polyester, 5% elastane. Top front and back length: approx. 28.7 in/73 cm, trousers total length: approx. 40.2 in/102 cm, and hem: approx. 9.8 in/25 cm for UK size 12-14. *Machine wash at 30°C.*

Colour: **fuchsia**

Sizes: **8-10 12-14 16-18 20-22 24-26**

Ref.: **ZP006**

Special Offer  
FOR HER  
UP  
TO  
**65% OFF**



## TOP + TROUSERS

£**19.99**  
£52.90

Save £32.91

Partially elasticated  
waistband

STRETCHY  
JERSEY

No ironing required  
Quick dry

